

TWILIGHT
Series BY MASTER SPAS

TWILIGHT SERIES 87.3

The dual-lounge seating in the TS 87.3 provides maximum therapy for both of you. Along with the Master Blaster™ Foot Therapy System, and a StressRelief™ Neck and Shoulder Seat, there is no better way to relax after the day.

Seating Capacity	7
Dimensions (inches/cm)	94"x 84"x 38" (239 cm x 213 cm x 97 cm)
Gallons	310
Weight (Dry/Full)	780 lbs. / 3,370 lbs.
Pumps	3
Number of Jets	49 Jets (2 Master Blasters)
Water Features	3
Filtration	EcoPur®
LED Lighting	Orion Light System™
Noise Reduction System	Standard



PREMIUM OPTIONS

Fusion Sound System, Wi-Fi Module, Afterglow Jet Package, QuietFlo Water Care System, Mast3rPur™ Water Management System*, Vac Formed ABS Pan Bottom



SKIRT OPTIONS

STANDARD DuraMaster Premium™

OPTIONAL DreamStone™

OPTIONAL MasterTech™ Premium Synthetic Skirting

OPTIONAL DuraMaster II Ultra



Portabella



Espresso



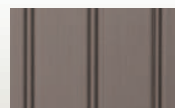
Desert



Granite



Walnut Grove



Driftwood

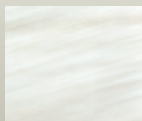


Black

SHELL OPTIONS

STANDARD COLORS

PREMIUM COLORS



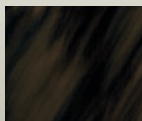
Sterling Silver



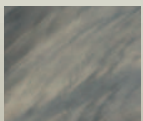
Sierra



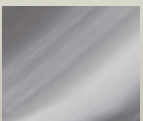
Oceanwave Opal



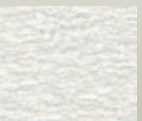
Midnight Canyon



Tuscan Sun



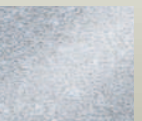
Storm Clouds



Cameo



Silk



Winter Solstice



www.TwilightSeriesSpas.com

*The Mast3rPur option is only available on hot tubs equipped with the QuietFlo Water Care System.