



HEALTHY LIVING HOT TUBS

HL 7

The ergonomic lounge in this model is the perfect way to relax after a long day. Just sit back, put your feet up and let the stress be washed away. Every Healthy Living Hot Tub comes standard with our patented Master Force™ Bio-Magnetic Therapy System and EcoPur® Filtration. Add the optional Fusion Sound System to provide rich, beautiful sound.

Dimensions:	84" x 84" x 37" (213 cm x 213 cm x 94 cm)
Weight (Dry/Full):	750 lbs. / 4,225 lbs.
Gallons:	305
Pumps:	2
Filtration:	EcoPur®
Number of Jets:	45
Seating Capacity:	5
Water Features:	2
LED Lighting:	Multi-color Interior Lights
Exclusive Feature:	Noise Reduction System

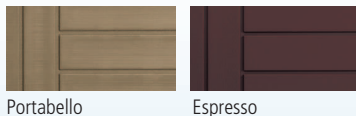
SYSTEM OPTIONS

- QuietFlo Water Care System
- Mast3rPur Water Management System*
- Fusion Sound System
- Wi-Fi Module



SKIRT OPTIONS

STANDARD DuraMaster Premium™



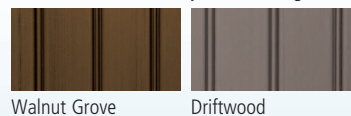
Portabello Espresso

OPTIONAL DreamStone™



Desert Granite

OPTIONAL MasterTech™ Premium Synthetic Skirting



Walnut Grove Driftwood



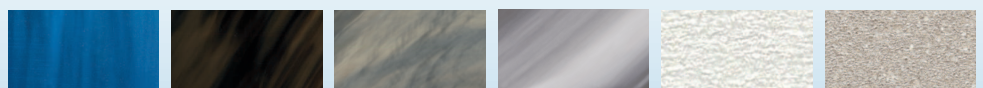
SHELL OPTIONS

STANDARD COLORS



Sterling Silver Sierra

PREMIUM COLORS



Oceanwave Opal Midnight Canyon Tuscan Sun Storm Clouds Cameo Silk

*The Mast3rPur™ option is only available on hot tubs equipped with the QuietFlo Water Care System.