



HEALTHY LIVING HOT TUBS



HL 740L

The ergonomic lounge in this model is the perfect way to relax after a long day. Just sit back, put your feet up and let the stress be washed away. Every Healthy Living Hot Tub comes standard with our patented Master Force™ Bio-Magnetic Therapy System and EcoPur® Filtration. The optional Fusion Sound System will add rich, beautiful sound for you to enjoy.

| | |
|--------------------|--|
| Dimensions: | 84" x 84" x 37" (213 cm x 213 cm x 94 cm) |
| Weight (Dry/Full): | 725 lbs. / 4,155 lbs. |
| Gallons: | 300 |
| Pumps: | 1 |
| Filtration: | EcoPur® |
| Number of Jets: | 40 |
| Seating Capacity: | 5 |
| Water Features: | 1 |
| LED Lighting: | Colorscape Light |
| Exclusive Feature: | Noise Reduction System |

SYSTEM OPTIONS

- QuietFlo Water Care System
- Mast3rPur Water Management System*
- Fusion Sound System
- Wi-Fi Module



SKIRT OPTIONS

STANDARD DuraMaster Premium™



Portabello Espresso

OPTIONAL DreamStone™



Desert Granite

OPTIONAL MasterTech™ Premium Synthetic Skirting



Walnut Grove Driftwood



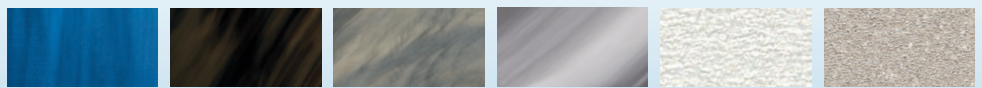
SHELL OPTIONS

STANDARD COLORS



Sterling Silver Sierra

PREMIUM COLORS



Oceanwave Opal Midnight Canyon Tuscan Sun Storm Clouds Cameo Silk

*The Mast3rPur™ option is only available on hot tubs equipped with the QuietFlo Water Care System.